



£895 PCM

Westbrook Vale, Evercreech BA4 6JN

Terraced House | 2 Bedrooms | 1 Bathroom

01749 681356



www.keyringlettings.co.uk



Step Inside

Key Features

- Modern Two bedroom house
- Popular residential location, close to local amenities and schools
- Modern fitted kitchen with cooker
- Modern family bathroom with shower
- Gas central heating
- UPVC double glazed windows
- Enclosed rear garden
- Allocated parking space
- Available now

Property Description

A two bedroom modern house located in a popular residential location, close to the local schools and amenities. Offered unfurnished, modern kitchen and bathroom, gas central heating, UPVC double glazed windows, enclosed rear garden and allocated parking. Available now.

Main Particulars

KeyRing Lettings are pleased to offer this two bedroom modern house in Evercreech for rent. The property is located in a popular residential location, close to the local schools and amenities.

Offered unfurnished, the property comprises of living room, modern fitted kitchen with cooker, modern family bathroom with shower and two double bedrooms.

Outside, there is an enclosed rear garden and off road allocated parking.

The house also offers ample storage.

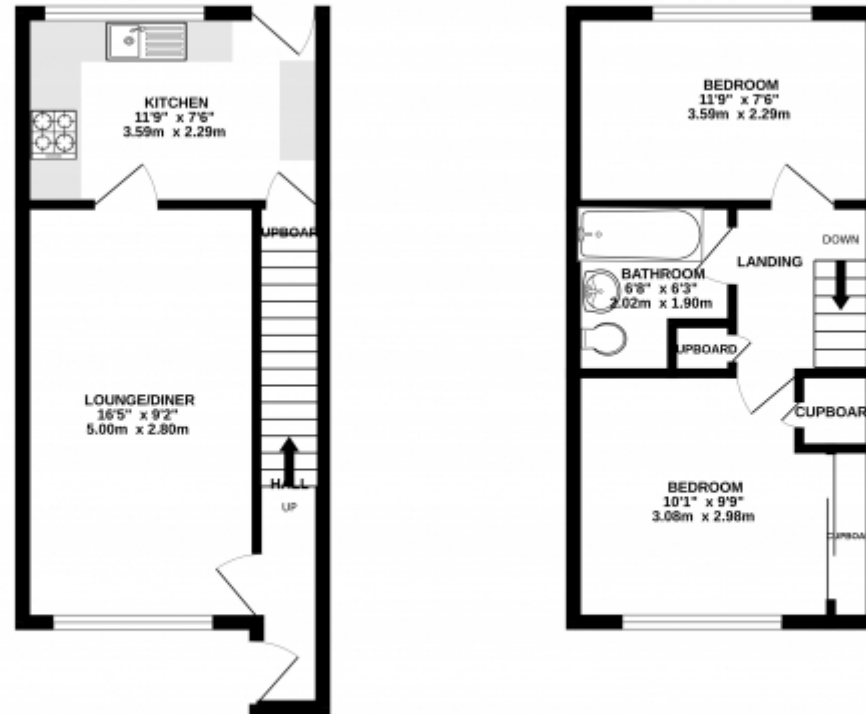
Available now. Council tax band B

Viewings are strictly by appointment. Please call us for more information, or a viewing.



GROUND FLOOR

1ST FLOOR



Whilst every attempt has been made to ensure the accuracy of the floorplan contained here, measurements of doors, windows, walls and any other items are approximate and no responsibility is taken for any error, omission or mis-statement. This plan is for illustrative purposes only and should be used as such by any prospective purchaser. The furniture, fixtures and appliances shown have not been tested and no guarantee as to their operability or efficiency can be given.
Made with Metrage CS2024

This floorplan is for illustrative purposes only and the location of doors, windows and other items are approximate.

Agents notes: All measurements are approximate and for general guidance only and whilst every attempt has been made to ensure accuracy, they must not be relied on. The fixtures, fittings and appliances referred to have not been tested and therefore no guarantee can be given that they are in working order. Internal photographs are reproduced for general information and it must not be inferred that any item shown is included with the property. Copyright ©

Telephone: 01749 681356



www.keyringlettings.co.uk