



£525 PCM

Eagle Lane, Frome BA11 1DR

Flat | 1 Bedroom | 1 Bathroom

01749 681356



[www.keyringlettings.co.uk](http://www.keyringlettings.co.uk)



# Step Inside

---

## Key Features

- Town centre location and allocated secure parking
- Newly refurbished
- Economy electric heating
- Double glazed windows and doors
- Modern fitted kitchen with cooker
- Modern fitted shower room
- Double bedroom
- Living area
- Available now

## Property Description

A centrally located, newly refurbished one bedroom flat. Living space, modern kitchen, modern bathroom with shower, double bedroom and secure, off road allocated parking space. Available now.

## Main Particulars

A newly refurbished, one bedroom flat in the heart of Frome's town centre. Offered unfurnished the property offers: living space, modern fitted kitchen with cooker, double bedroom with storage, and modern fitted bathroom with shower.

The flat further benefits from economy electric heating, double glazed windows and doors, plus a secure, off road parking space to the front.

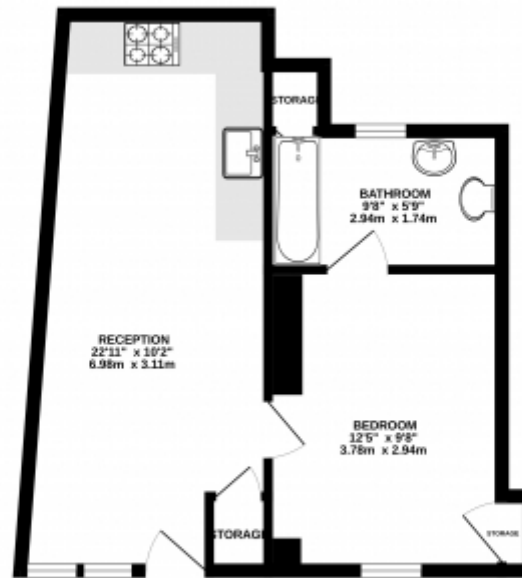
Available now.

Council tax band A

Unfortunately, due to the central location, no pets are allowed at this property.



GROUND FLOOR



Whilst every attempt has been made to ensure the accuracy of the floorplan provided herein, measurements of walls, windows, doors and other items are approximate and no responsibility is taken for any errors, omissions or misstatements. The plan is for illustrative purposes only and should not be used as the definitive position. The plan is subject to change without notice and no guarantee is given as to the accuracy of the information provided.

This floorplan is for illustrative purposes only and the location of doors, windows and other items are approximate.

Telephone: 01749 681356



[www.keyringlettings.co.uk](http://www.keyringlettings.co.uk)